

B I Z N E T B R O A D C A S T 2 . 1 . 1

Release Notes

BizNet Broadcast

Build 2.1.1

3/17/2013

Copyright Notice

BizNet Software makes no representations or warranties with respect to the contents of this document and specifically disclaims any implied warranties of merchantability or fitness for any particular purpose.

We welcome user comments and reserve the right to revise this publication and to make improvements or changes to the products and programs described in this publication at any time without notice.

Mailing Address:

BizNet Software, Inc.
14785 Preston Rd.
Suite 800
Dallas, TX 75254

Phone:

1-888-803-5227

Web Site:

<http://www.biznetsoftware.com>

© Copyright 2014 by BizNet Software®, Inc. All rights reserved.

Printed in the United States of America

No part of this publication may be reproduced in any form without the prior written consent of BizNet Software, Inc.

Trademarks

Broadcast is a registered trademark of BizNet Software, Inc.

Windows and Microsoft Excel are registered trademarks of Microsoft Corp.

All other trademarks are acknowledged.

Table of Contents

- 1. BizNet Broadcast - Enhancements 4**
 - 1.1. Minor Enhancements 4
 - 1.1.1. Broadcast Message Box Displays Column and Row Count..... 4
 - 1.1.2. Broadcast Automatic Overwrite Option for Output Files..... 4
 - 1.1.3. A File Name is Required with MergeFile Parameter 5

- 2. BizNet Broadcast – Bug 6**
 - 2.1. Broadcast Distribution Template is not supported in xls, xlm, xlt, and csv Format..... 6
 - 2.2. SMTP Error Prompt Message Box Update 6
 - 2.3. Selection Directive Type Spelling Error [NOPRESERVE]**Error! Bookmark not defined.**
 - 2.4. Preserve Formula is Enabled with no Formulas Entered Error 6
 - 2.5. Preserve Formula is Disabled with no Formulas Entered Error 8
 - 2.6. Named Ranges are not Referenced in the Additional Optional Parameters 9
 - 2.7. Broadcast Add-in Name does not Display in the Customize Ribbon..... 10
 - 2.8. Missing Path or Email Message Prompt Update 10
 - 2.9. About Box - Trial Mode Displays 1/1/900 Issue 11
 - 2.10. Broadcast Distribution EmailBody Issue..... 11
 - 2.11. Switching Between BizInsight and Broadcast Issue 11

- 3. BizNet Broadcast – Known Issues 12**

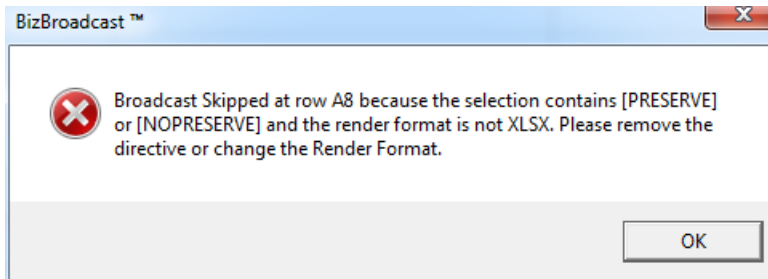
- 4. Appendix 13**

1. BizNet Broadcast - Enhancements

1.1. Minor Enhancements

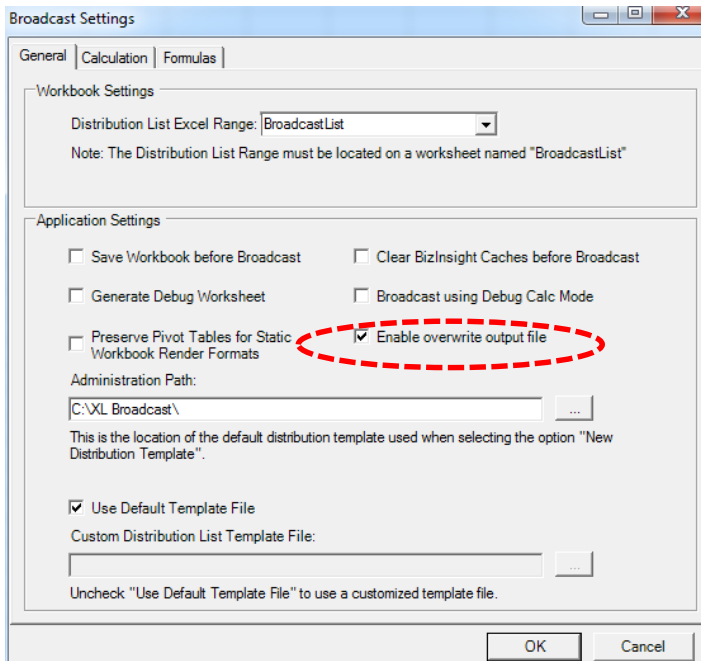
1.1.1. Broadcast Message Box Displays Column and Row Count

When Broadcast encounters an issue in a Distribution row, the error message prompt will provide the location of the Distribution row that was unsuccessful. For example, Broadcast skipped row A8 due to an error in the Selection column.



1.1.2. Broadcast Automatic Overwrite Option for Output Files

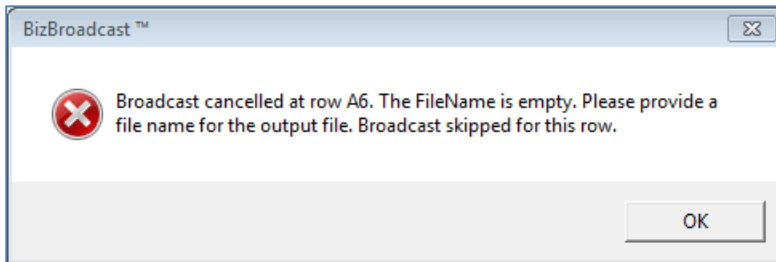
Broadcast automatically overwrites files with the same file name and extension in the output folder location. The Distribution row must contain a Path and Filename. In the Application Setting, a new option allows the user to enable or disable the overwriting feature. Broadcast has the overwrite files option enabled by default. When the overwrite option is unchecked, Broadcast appends a number to the file name. If both Path and EmailTo columns are used and the overwrite feature is disabled, the email will contain the file name with the appended number.



1.1.3. A File Name is Required with MergeFile Parameter

Users are required to provide a file name for the output file if the distribution row uses a MergeFile parameter. Broadcast will stop the processing and prompt the user. Users will not be required to provide a file name when MergeFiles is not used. Broadcast will use the default naming convention, Book1.

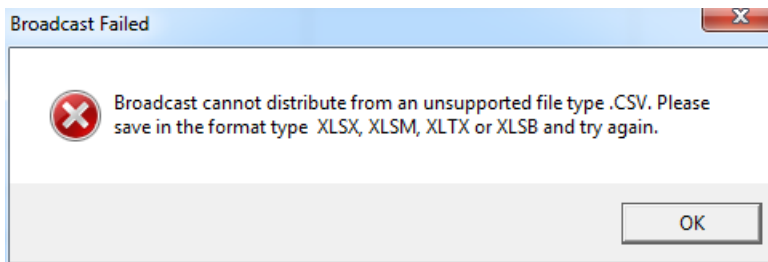
Selection	FileName	MergeFiles
Sheet1		C:\Users\test\Documents\Book1.xlsx



2. BizNet Broadcast – Bug

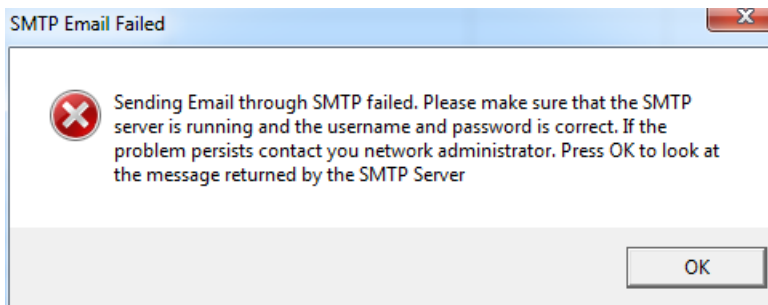
2.1. Broadcast Distribution Template is not supported in xls, xlm, xlt, and csv Format

When a user saves a workbook with a Broadcast Distribution template in a xls, xlm, xlt, or csv format, then the user attempts to run Broadcast using the new workbook, the user will experience an unhandled exception during processing. Broadcast Distribution List is only supported in xlsx, xlsxm, xltx, or xlsb format. In the event a user attempts to process a Broadcast Distribution template in an unsupported format, Broadcast will prompt the user to save the workbook in a supported file type.



2.2. SMTP Error Prompt Message Box Update

Error messaging has been enhanced SMTP email output.

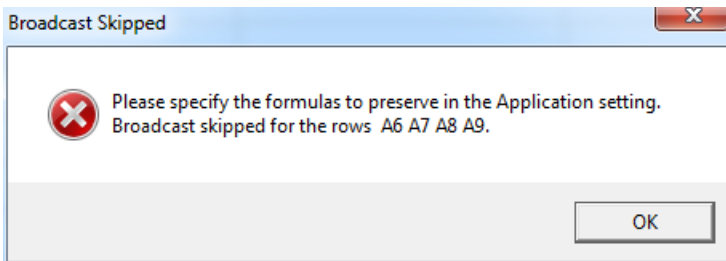
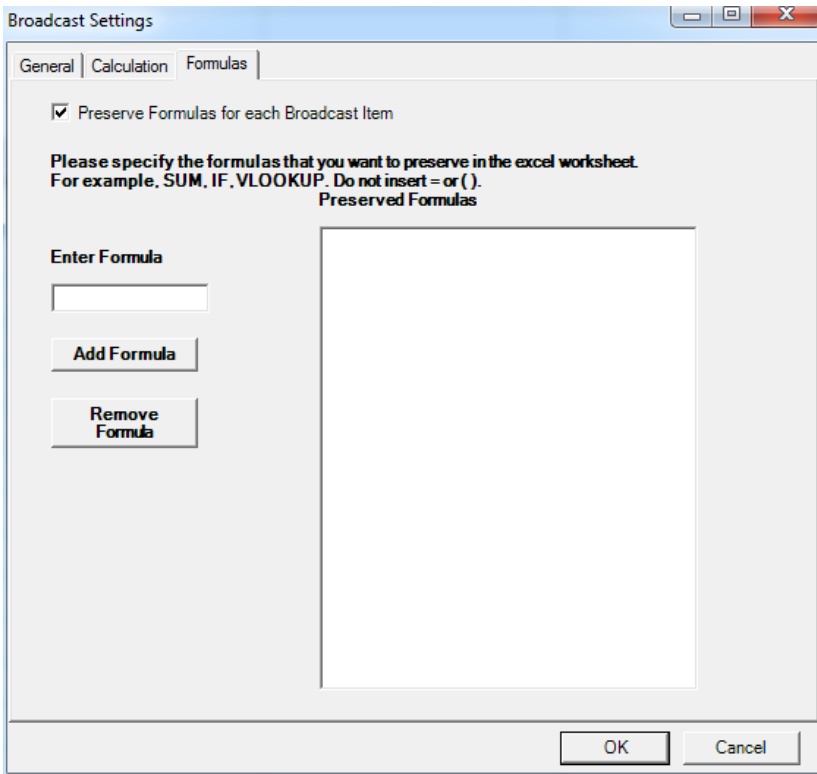


2.3. Preserve Formula is Enabled with no Formulas Entered Error

In the previous Broadcast release, a distribution would fail when the following circumstances existed:

- Preserve formulas was enabled in the Application Settings,
- No formulas were entered in the list, and
- The RenderFormat was xlsx.

This issue has been resolved to allow Broadcast to continue processing all rows. The user will now be notified of skipped rows after valid Broadcasts have completed.

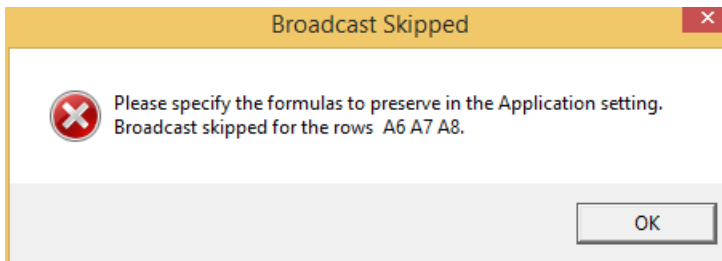
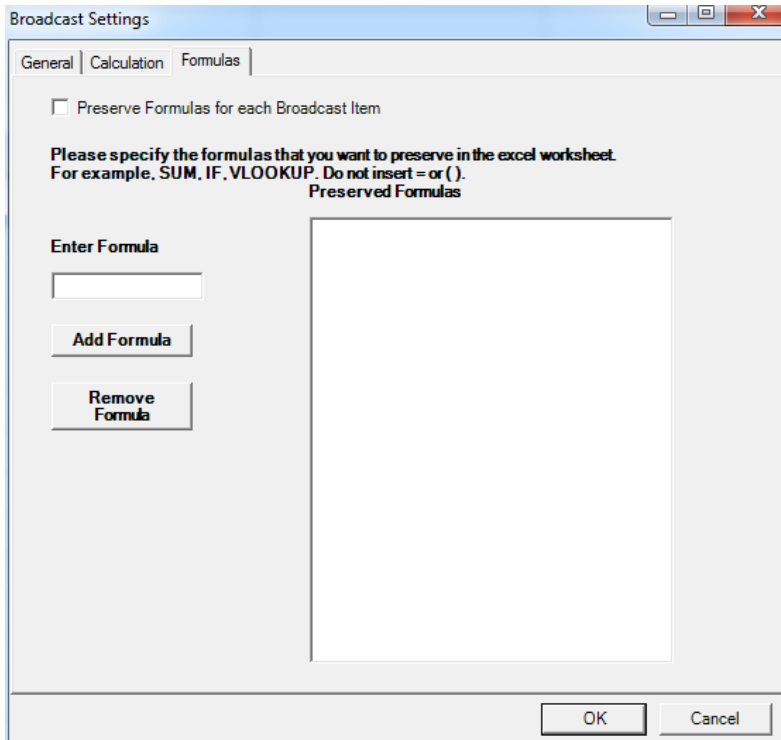


2.4. Preserve Formula is Disabled with no Formulas Entered Error

In the previous Broadcast release, a distribution would fail when the following circumstances existed:

- Preserve formulas was disabled in the Application Settings
- No formulas were entered in the list
- RenderFormat was xlsx, and
- The[PRESERVE] directive is used in the Selection column.

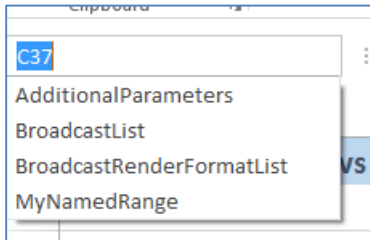
This issue has been resolved to allow Broadcast to continue processing all rows. The user will now be notified of skipped rows after valid Broadcasts have completed.



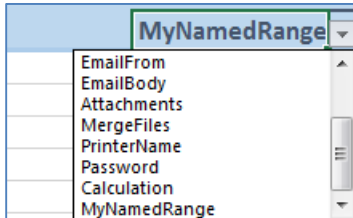
2.5. Named Ranges are not Referenced in the Additional Optional Parameters

Previously, once a user double-clicked the Additional Parameters list to display all named ranges in the Excel workbook, the list would never update to reflect new named ranges that had been created. This issue has been resolved by adding the new named range to the delivered Additional Parameters drop down list. To update the Additional Optional Parameters drop down list, simply double-click on the column header again.

1. Create a name range



2. Double-click an Additional Optional Parameters drop-down list. This will refresh the list.

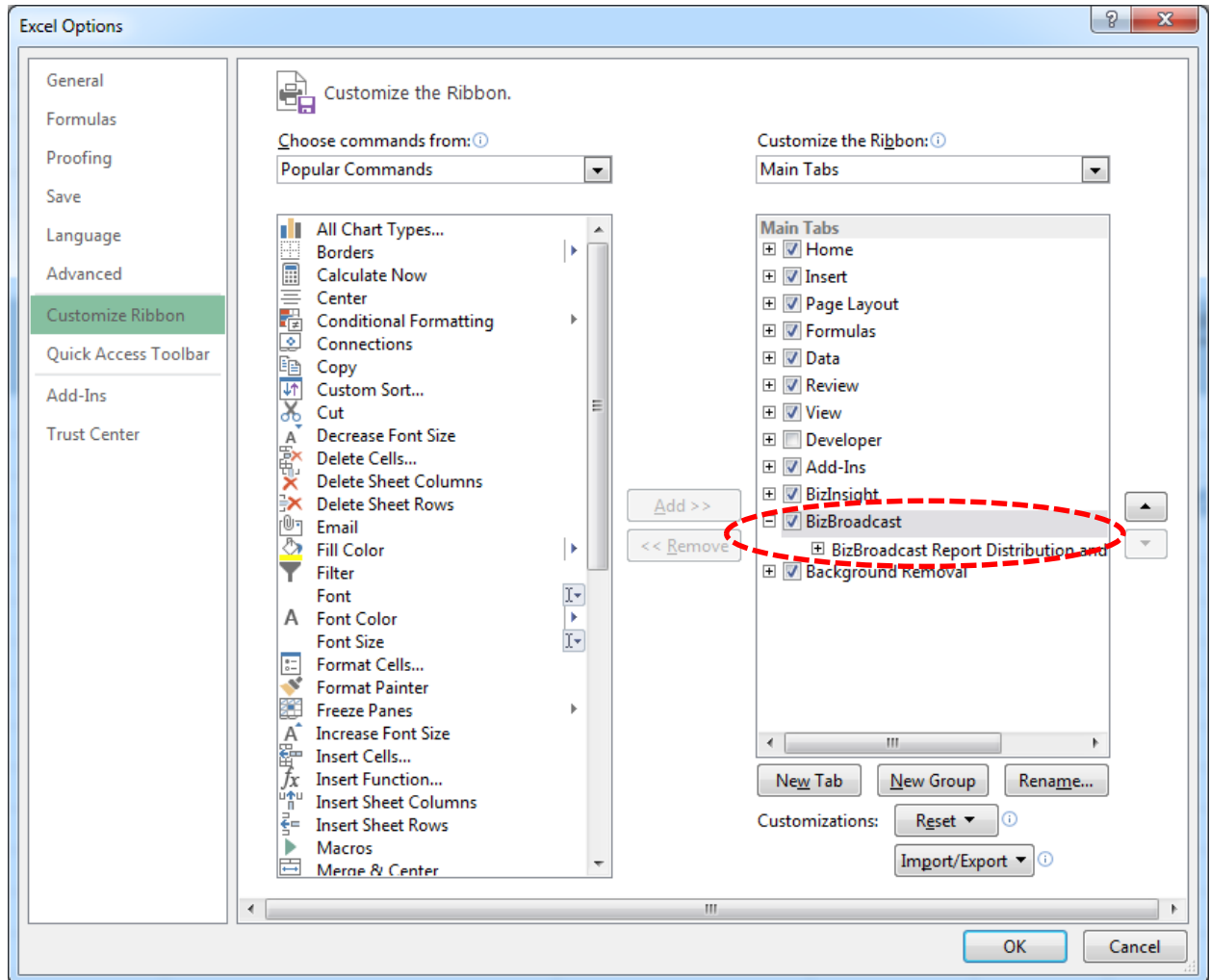


3. The named range appears in the Distribution Template Named Range after double-clicking on the Additional Optional Parameters drop-down list.

<i>AdditionalParameters</i>	<i>BroadcastRenderFormats</i>
	PDF
EmailCC	XPS
EmailBCC	XLSX
EmailPriority	XLSXVALUES
EmailFrom	XLSM
EmailBody	XLSMVALUES
Attachments	XLS
MergeFiles	XLSVALUES
PrinterName	MHTML
Password	HTML
Calculation	CSV
MyNamedRange	

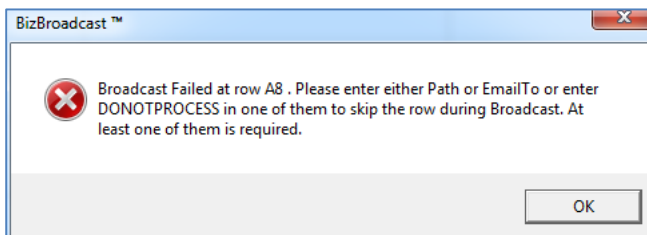
2.6. Broadcast Add-in Name does not Display in the Customize Ribbon

In the Customize Ribbon section, BizNet Broadcast is displayed in the File> Options > Customized Ribbon menu.



2.7. Missing Path or Email Message Prompt Update

In the Distribution template, when both Path and Email sections are blank, the error messaging prompt did not include the proper row address. The new process provides the row address in the error message. The user will receive an error message prompt for each row missing Path and Email.

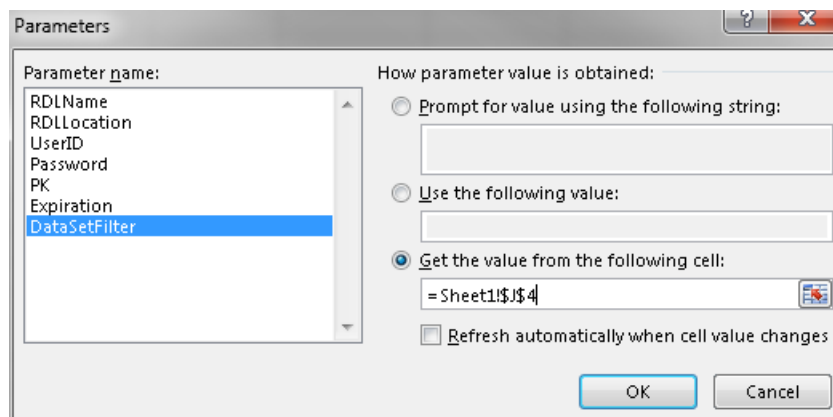


3. BizNet Broadcast – Known Issues

1. When errors are prompted during Broadcast processing, reference the About box for further details on the issue.
2. A reference error can occur in any workbooks. If cell referencing is used in the Distribution Template and the reference is broken or missing, Broadcast processing may return a #REF! error in the Excel ID: -2146826265 in the file or filename.
3. When users save a Broadcast distribution template in xltx (xlt format is unsupported) and add a new node in BizInsight to drag and drop the workbook as a template, Broadcast cannot process the drag and drop distribution template inside the workbook template. The drag and drop method in BizInsight creates a temporary workbook file which cannot be processed for multiple iterations by Broadcast.

Workaround:

- A. If the drag and drop method is used, save the Distribution template in only xlsx format for Broadcast to process. The newly created workbook will need to be saved on the local machine for Broadcast to distribute multiple times.
 - B. In Excel, open the workbook template separately and click the Run Now button to process the Broadcast distribution template.
4. When users save a Broadcast Distribution template with a workbook containing dynamic analysis sets (see screenshot below) and the user attempts to distribute using Broadcast, Broadcast will prompt to the user save the workbook and fail to distribute after the first time. Excel workbooks that are dragged and dropped from BizInsight are created as a temporary file on the local machine. Broadcast is unable to recognize a temporary file. The workaround for the drag and drop feature in BizInsight is to save Broadcast Distribution templates in only xlsx format and save the newly created workbook on the local machine for Broadcast to distribute multiple times.



4. Appendix

Preserve and No Preserve Process Order

1. RenderFormat: XLSX or XLSXVALUES
2. Preserve formula is enabled or disable (Application Setting). Formula list contains values.
3. Preserve or No Preserve is used in the Selection column
4. Merge is or is not selected in the Additional Optional Parameters

RenderFormat: XLSX

		[CONTENT]		
		Preserve	No Preserve	Alternative Directive
Application Setting	Preserve Formula Enabled	N/A	Worksheet contains all formulas.	Only formulas listed by the user are preserved. All else values.
	Preserve Formula Disabled	Only formulas listed by the user are preserved. All else values.	N/A	No changes

		[CONTENT]			Merge File Parameter
		Preserve	No Preserve	Alternative Directive	
Application Setting	Preserve Formula Enabled	N/A	Worksheet contains all formulas.	Only formulas listed by the user are preserved. All else values.	All merged workbooks contain all formulas
	Preserve Formula Disabled	Only formulas listed by the user are preserved. All else values.	N/A	No changes	All merged workbooks contain all formulas

[CONTENT]

	Preserve	No Preserve	Alternative Directive
Application Setting Preserve Formula Enabled	Do Not Use	Do Not Use	No changes
Application Setting Preserve Formula Disabled	Do Not Use	Do Not Use	No changes

[CONTENT]

Merge File Parameter

	Preserve	No Preserve	Alternative Directive	
Application Setting Preserve Formula Enabled	Do Not Use	Do Not Use	No changes	All merged workbooks contain all values.
Application Setting Preserve Formula Disabled	Do Not Use	Do Not Use	No changes	All merged workbooks contain all values.